

1.0 INTRODUCTION

This drawing describes the requirements for procuring the unpackaged integrated circuit die used in the manufacture of part numbers HC138, SC138 & HCT138, which are 3-line to 8-line Decoders. All changes and/or substitutions to the procured parts are subject to prior approval by ICI. This specification is to be used with GEN-008.

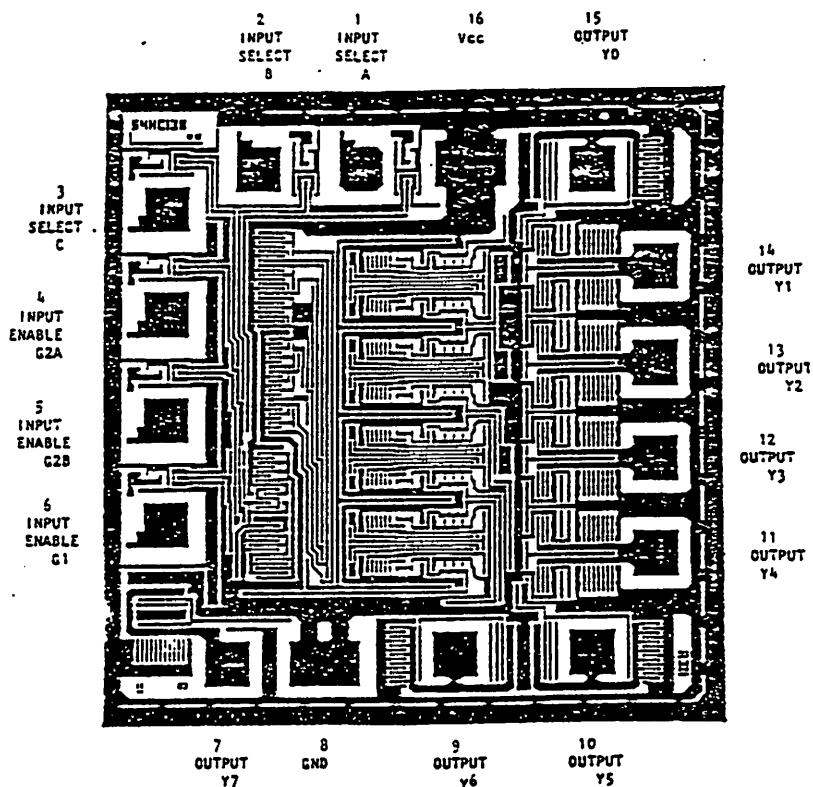
2.0 APPLICABLE DOCUMENTS

GEN-008 General Specification for Integrated Circuit Dice

3.0 REQUIREMENTS

3.1 Mechanical/Physical Characteristics

Each die shall be configured as shown in Figure 1, Figure 2, Figure 3 or Figure 4.



NOTES:

1. Mfr. National
2. Die size .078 x .080 ± .005

FIGURE 1
DIE CONFIGURATION

99126-003 B

Integrated Circuits Incorporated 10301 WILLOWS ROAD, REDMOND, WA 98052	SIZE	CAGE NO.	DRAWING NO.	REV
	A	50821	85133	B
SCALE			SHEET 2 OF 7	